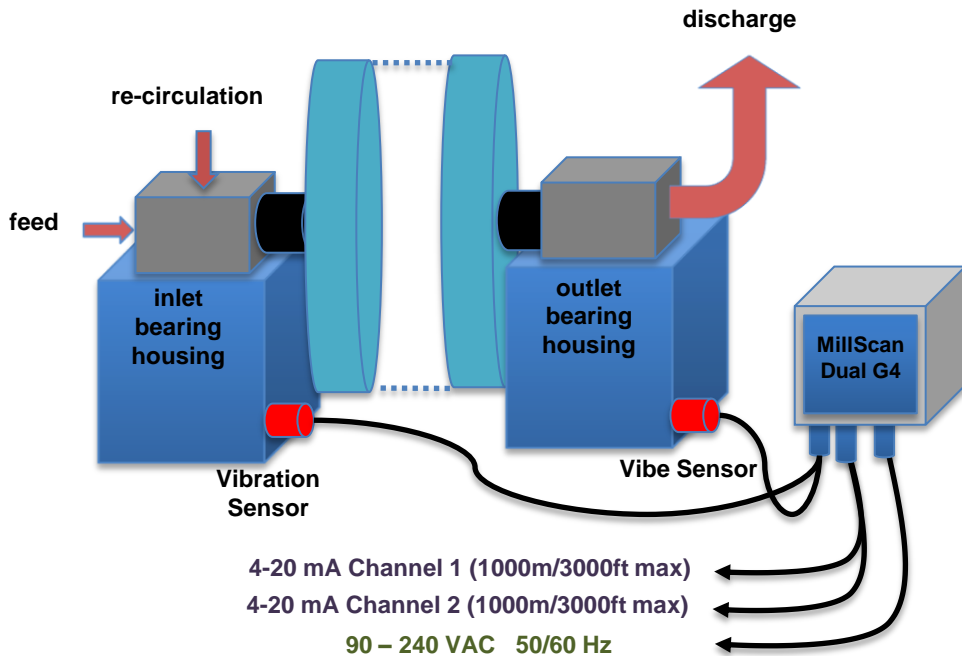


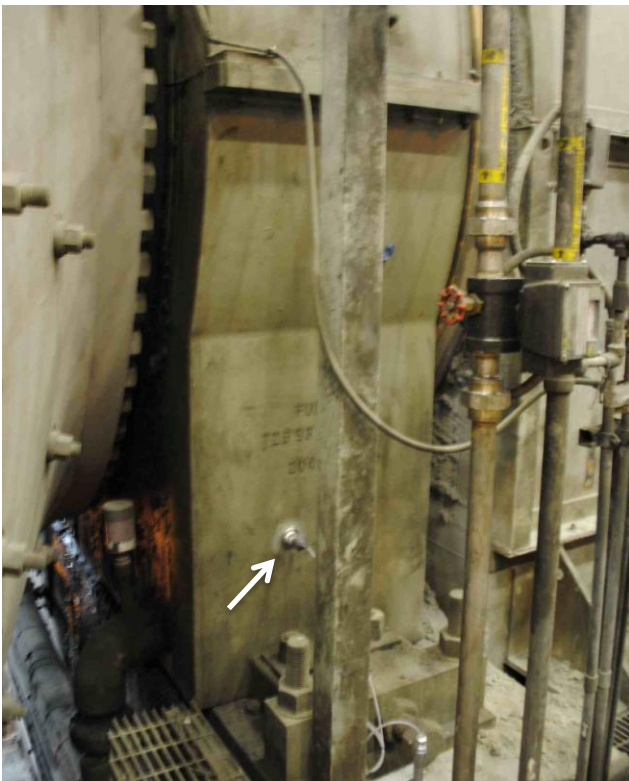
Millscan Dual G4 – Installation



1. The MillScan G4 consists of **two fixed positions sensors** (Sensor1 and Sensor2) and a **main unit**.
2. Sensor1 has a cable that is approximately 10 meters long (~30 ft.) and Sensor2 has a cable length equal to 30 meters long (~90 ft.). One sensor is placed on the outlet bearing housing while another is placed on the inlet bearing housing. Note: It does not matter which sensor is placed on a particular bearing housing. **Do not drop sensors.**
3. **The main unit should be mounted between the inlet and outlet such that each sensor cable can be routed to its corresponding inlet or outlet bearing structure.**
4. The main unit electrical requirements are power (90-240 VAC, 1 A) and two 4-20mA outputs which need to be connected to a PLC in your electrical room. Standard twisted pair cable should be used for these two 4-20mA signals.
Note: The 4-20mA signals require external (24V) loop power supplied by your PLC.
5. See the **Wiring diagram included in the main unit** for more information on the exact location of the electrical connections in the main unit. See typical install **pictures on the other side of this page for more details.**

Millscan G4 – Installation Pictures

Inlet and Outlet Fixed Position Sensors:



G4 Dual Main Unit:

